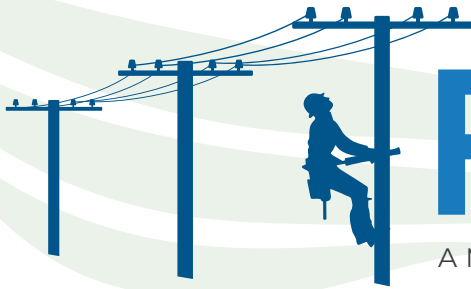


# POWERLINES

A MONTHLY PUBLICATION FOR THE MEMBERS OF WHITEWATER VALLEY REMC



## IN THIS ISSUE

### PAGE 2

Apply for the Youth Power and Hope Awards  
Open House  
Go Above and Beyond for a Safe Harvest, Continued

### PAGE 3

Shedding Light on Hunger Golf Tournament  
Your Electric Cooperative Listens

### PAGE 4

Bill Credit Winners  
Secure Payment Line Changes  
Energy Efficiency Tip

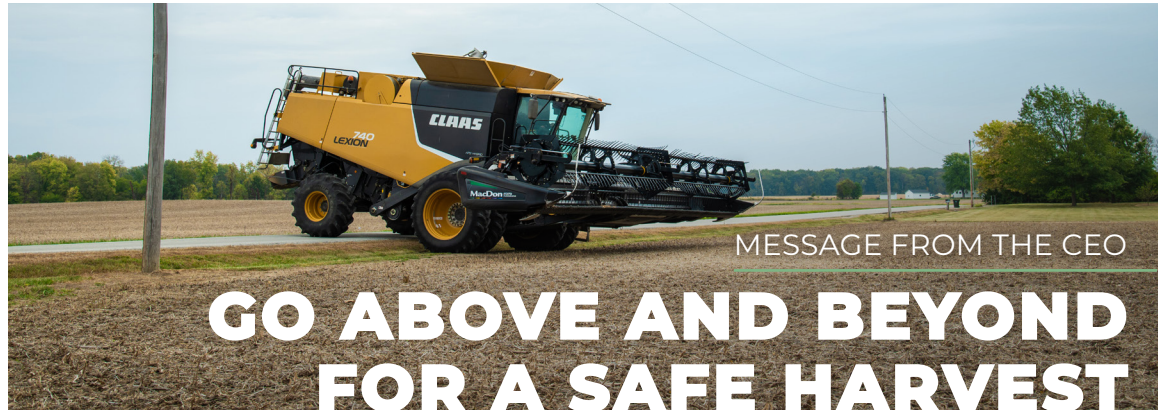
## SEPTEMBER DUE DATES

The due dates for payment of electric bills are **September 19** and **26**.





  
[www.remc.com](http://www.remc.com)



MESSAGE FROM THE CEO

## GO ABOVE AND BEYOND FOR A SAFE HARVEST



**MARY JO THOMAS**  
CEO

Modern farming often relies on data and equipment with GPS and auto-guidance systems. However, even with these modern conveniences, farm workers must remain vigilant. That's because farming is considered one of the most dangerous jobs.

Massive machinery is indispensable to farming, but the same impressive size, height and extensions make them particularly vulnerable to contacting power lines. That's why staying alert, focused and knowledgeable about potential hazards and safety procedures is crucial.

### 360 AWARENESS

During a busy harvest season, the familiar sights around the farm can easily fade into the background, and farm workers can overlook the power lines overhead. However, failing to notice them can lead to deadly accidents.

Awareness of your surroundings, around, above and below, and planning safe equipment routes can significantly reduce the risk of accidents. Even with GPS and auto-steering, it's imperative that farm workers keep a close eye on the equipment's location and are ready to take action if necessary.

Exposed underground power lines, defective wiring in farm buildings and extension cords are also hazards. Grain bins can pose a potential danger as

well. The National Electrical Safety Code requires power lines to be at least 18 feet above the highest point on any grain bin with which portable augers or other portable filling equipment are used. If you plan to install new grain bins or you're concerned about the proximity of power lines to existing grain bins, contact Whitewater Valley REMC.

### SMART HARVEST SAFETY TIPS

To ensure a safer harvest season, SafeElectricity.org recommends the following tips to avoid electrical accidents on the farm:

- **Exercise caution near power lines.** Be careful when raising augers or the bed of grain trucks around power lines.
- **Use spotters when operating large machinery near power lines.** Ensure the spotters do not touch the machinery while it is moving near power lines.
- **Lower equipment extensions, portable augers or elevators before moving or transporting equipment.** Do not raise equipment, such as ladders, poles or rods into power lines. Remember that non-metallic materials like lumber, tree limbs, ropes and hay can conduct electricity, especially when damp, dusty or dirty.
- **Never attempt to raise or move power lines to clear a path.** Doing so could result in electric shock or death.

*continued on page 2*



# YOUTH power & hope AWARDS

TELL US YOUR  
STORY AND  
YOU COULD  
BE A WINNER.

## APPLY NOW!

Up to five qualified candidates will each receive \$500 and be featured in an upcoming issue of Indiana Connection, among other highlights.

Interested? Simply complete the online application. When doing so, provide examples of and information about your community service activities and share any relevant photos if available. Be sure to list references who we may contact for additional information.

Parents, please visit [indianaconnection.org/youthpowerandhope](http://indianaconnection.org/youthpowerandhope) to apply and learn more.

## QUESTIONS?

info@IndianaConnection.org  
or 317-487-2220

*Applicant's parent(s)/  
guardian(s) must be members of  
an Indiana electric cooperative  
to apply for the awards.*

APPLICATIONS ARE DUE  
FRIDAY, OCT. 4



# Open House

We are excited to announce that our Open House will be on Thursday, October 10th, from 9 a.m. to 6 p.m. The event will feature a ¼ mile tour of our new facility and outside areas, including the warehouse and pole yard. Please wear appropriate shoes for the tour. Following the tour, refreshments will be available.

We request you schedule a time for your tour to help keep the tours running smoothly and not too crowded. Keep an eye out for an invitation sent to your email or scan the QR code to the right to select your tour time slot. If you need help booking your tour time, feel free to call our office at 800-529-5557 or 765-458-5171, and our member support representatives will assist you.

We are excited to welcome you to our new home!

## SIGN UP



continued from page 1

- **Avoid using metal poles inside bins.** Don't use metal poles to break up bridged grain inside or around bins.
- **Hire qualified electricians.** Ensure that qualified electricians handle work on drying equipment and other farm electrical systems.

While rare, the only reason to exit equipment that has come into contact with overhead lines is if the equipment is on fire. However, if it happens, jump off the equipment with your feet together and without touching the machinery and the ground at the same time. Then, still keeping your feet together, hop to safety as you leave the area.

## 5 Tips for a Safe Harvest

Electrical safety during harvest season requires vigilance and proactive measures. Follow these tips to reduce the risk of electrical accidents.

1. Maintain at least a 10-foot distance from power lines when operating equipment like grain augers, elevators and other tall machinery.
2. Use a spotter to navigate safely around power lines and other electrical equipment.
3. Ensure all farm workers are trained on electrical safety procedures.
4. Regularly inspect all electrical equipment and machinery for signs of wear and damage.
5. Keep first aid kits and emergency contact numbers in an easily accessible location.







# SHEDDING LIGHT ON HUNGER ANNUAL GOLF TOURNAMENT

On July 27th, we successfully hosted our 7th annual Shedding Light on Hunger golf tournament and raised over \$9,000. This event helps us support local communities facing food insecurity. We want to thank our vendors, local businesses, tournament participants, and volunteers for making the event successful.

Following the tournament, WWVREMC employees began assembling lunch bags filled with food to distribute to students at the Live in Liberty Back to School Party on July 31st. We appreciate all who sponsored lunch bags this year, and David Block won the \$100 Amazon gift card in our lunch bag sponsor drawing! Congratulations!

Creating the Shedding Light on Hunger program aligns with one of our cooperative principles — Concern for Community. It began in 2012 as a food collection and distribution program to help local food banks keep their shelves filled. The hidden account number is 940500. Funding for the program comes entirely from cooperative employees, donations from partners, and money raised from the annual charity golf tournament.

If you know of an organization in our service territory that could benefit from Shedding Light on Hunger funds, you can submit a request on our website at [wwwremc.com/shedding-light-on-hunger](http://wwwremc.com/shedding-light-on-hunger).

Your electric cooperative listens.  
Help us provide reliable service.

**As a residential member-consumer, the better we understand you, the better we can serve you.** That's why Whitewater Valley REMC occasionally surveys our members to identify emerging trends in power usage.

With the help of SMARInsights, an independent research firm, we are conducting an online survey to identify the types of heating and cooling systems, electronic devices and appliances you use. This will help us develop plans to provide reliable and efficient electric service throughout our communities.

Participants in the survey will be entered for a **chance to win one of five \$100 Amazon e-gift cards.**



« Scan this QR code with your smartphone or visit the link below to participate in the survey!  
[smarinsights.study/2024WWVREMC](http://smarinsights.study/2024WWVREMC)

Please have your account number available before starting the survey.



HOOSIERENERGY

## HIDDEN ACCOUNT NUMBER

Each month we hide an account number in the Powerlines. Did you find it?

## NO JULY WINNER

Keep reading your Powerlines each month. The next hidden account number could be yours!

## PAYMENT OPTIONS

### U.S. Mail

Whitewater Valley REMC, P.O. Box 350  
Liberty, IN 47353

### SmartHub

Log on at [www.vremc.com](http://www.vremc.com).

### Pay-by-Phone

Call 855-940-3859. Set up your PIN. Follow prompts.

### Liberty Office

In person or in the drop box.

### Automatic Withdrawal

Simply request a form and submit it to our office.

### Franklin County National Bank (FCN)

In person or in the drop box. Bring payment stub.

### VanillaDirect

Visit [vanilladirect.com](http://vanilladirect.com) for payment locations and details.

For more information about payment options, please call us:

765-458-5171 or 1-800-529-5557



## BILL CREDIT WINNERS

Our monthly drawing for five \$20 bill credits from all voting members of the 2024 annual meeting continues. Here are the winners.

### SEPTEMBER

Alan Overbeck, Liberty

Thomas Perry Jr., Fountain City

Tara McCreary, Liberty

Jerry Wright, Richmond

Jerry Shaw, Farmland

## SECURE PAYMENT LINE CHANGES

Whitewater Valley REMC is committed to providing our members with secure, up-to-date, and reliable ways to pay your electric bills. As part of this commitment, we are excited to share an upcoming upgrade to our Secure Payments Interactive Voice Response payment system. This enhancement is crucial for improving your payment experience, especially when paying by phone, and ensures compliance and adherence with PCI (Payment Card Industry) standards for added security. The PCI Security Standards Council issues these national standards, which apply to any entity that processes payment cards.

Most of your stored information will seamlessly move to the new system. However, the phone number you use to make payments will be changing. **Effective September 4, 2024, the new Secure Payments phone line will be 855-940-3859.** Thank you for your patience while we transition to the new system to better serve you.



## HELPFUL INFORMATION

### Liberty Office Hours

New location is 1201 S. State Road 101,  
Liberty, IN 47353

7:30 a.m. to 4:30 p.m. Monday through Friday

**CLOSED SATURDAYS, SUNDAYS AND HOLIDAYS**

### To Report an Outage or Emergency

Call 1-800-776-0493, 24 hours a day, 7 days a week.

Log in to your SmartHub account and report your outage.

### BE READY TO PROVIDE THE FOLLOWING INFORMATION:

- The name and account number under which your electric service is listed.
- Map location number.
- Your phone number – needed to call back or confirm power restoration.
- The type of problem you are experiencing – flickering lights, complete power outage, etc.

## ENERGY EFFICIENCY TIP

Now is the time to schedule annual maintenance for your home's heating system. During fall months, HVAC technicians are typically less busy, making it an excellent time for maintenance and any necessary repairs before winter. A qualified technician can clean filters, check for leaks, and ensure all system components are working efficiently to keep your home cozy and warm when the temperatures begin to drop.

And remember, we offer HVAC tune-up rebates for 50% off the qualifying cost, with a total refund not exceeding \$50. This rebate offer is good until December 2024. Apply today at [www.vremc.com/hvac-tune-rebate](http://www.vremc.com/hvac-tune-rebate).



1201 S. State Rd. 101, P.O. Box 349, Liberty, IN 47353

765-458-5171 • 1-800-529-5557 • [www.vremc.com](http://www.vremc.com) • [info@www.vremc.com](mailto:info@www.vremc.com)

President & CEO - Mary Jo Thomas • Powerlines Editor - Jennifer Scott